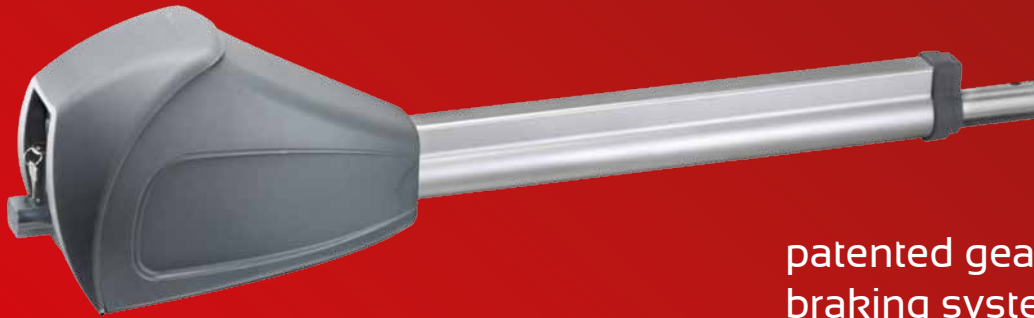




The strong swing gate operator for gates up to 7 m width per leaf

Dynamic Power
System (DPS)

maintenance-free
with a long service life



patented gear-saving
braking system

robust construction





The strong swing gate operator for gates up to 7 m width per leaf

Flexible:

- ▶ universally suitable for gates opening to the left and right
- ▶ 1- and 2-leaf operations possible as well as mixed operations with twist 200 E/EL¹⁾ and twist 350
- ▶ also applicable for closed gate fillings
- ▶ also for gates which open to the outside
- ▶ microprocessor control board with a range of setting options, such as pedestrian door function, automatic closing of gate, adjustable speed and early warning time, adjustable functions when obstacle is encountered while door is closing (either total or partial gate reversal)
- ▶ interface for TorMinal programming device
- ▶ quick installation and easy electrical connection

Secure:

- ▶ self-locking without any electrical lock (up to 5 m)
- ▶ accident prevention with continuous electronically controlled force measurement ("DPS - Dynamic Power System")
- ▶ operator can be engaged and disengaged in any position (e.g. in case of power failure)
- ▶ connections for safety facilities such as warning light and 2-/4-wire light barrier (photo cell), as well as for an external consumer (DC 24 V), floating relay output
- ▶ the operator is very reliable due to the patented SOMMER gear saving brake system, even with extreme forces of up to 3 tonnes applied, e.g. caused by wind load or vandalism

Innovative:

- ▶ regulated soft run, without power loss
- ▶ smooth operation thanks to a spring mounted threaded bar



secure and convenient emergency release system



electronic limit switches with Reed contacts provide for a precise travel limitation

Last updated: 10/2013. Literal errors, errors and technical changes excepted.

1) twist 200 E/EL operators and twist 350/XL control units can only be operated in connection with the conversion kit "twist XS" (item no. 3248V000).
2) with a max. width of 1.5 m per leaf, 1-leaf installation. 3) with a max. weight of 400 kg per leaf, 1-leaf installation.

Technical data:

Weight per leaf:	max. 1100 kg ²⁾
Width per leaf:	max. 7.0 m ³⁾
Travel length:	450 mm
Power supply:	AC 220 ... 240 V
Motor voltage:	DC 24 V
Nominal frequency:	50/60 Hz
Temperature range:	-20°C / +70°C
Protection class:	operator: IP 44 control unit: IP 65 / IP 67

Included in delivery:



"twist XL" operator unit, 1-leaf (item no. 3280V000)



"twist XL" control unit (item no. 3282V000)

- ▶ control unit in housing (IP 65)
- ▶ pluggable radio receiver (FM 868.8 MHz)
- ▶ 4-command transmitter (item no. 4020)



"twist XXL" control unit (item no. 3300V000)

- ▶ control unit in large housing (IP 67) with protection against contact and pre-installed main switch
- ▶ pluggable radio receiver (FM 868.8 MHz)
- ▶ 4-command transmitter (item no. 4020)

Hint: For a 2-leaf gate installation please use **2x "twist XL" operator units + 1x control unit**



Did you know?

SOMMER offers you **the proper bracket for almost every kind of installation.** We cover most fields of application, from "hot-dip galvanised" to "stainless steel" brackets. In the event where we still don't have the one you need we will work with you to find the perfect solution.



Visit our homepage: www.sommer.eu

SOMMER Antriebs- und Funktechnik GmbH
Hans-Boeckler-Str. 21 - 27 • D-73230 Kirchheim/Teck
phone: +49 (0) 70 21 / 80 01-0
fax: +49 (0) 70 21 / 80 01-101
e-mail: info@sommer.eu

